



## CTE RockStar Drill 2010 Peterbilt 365

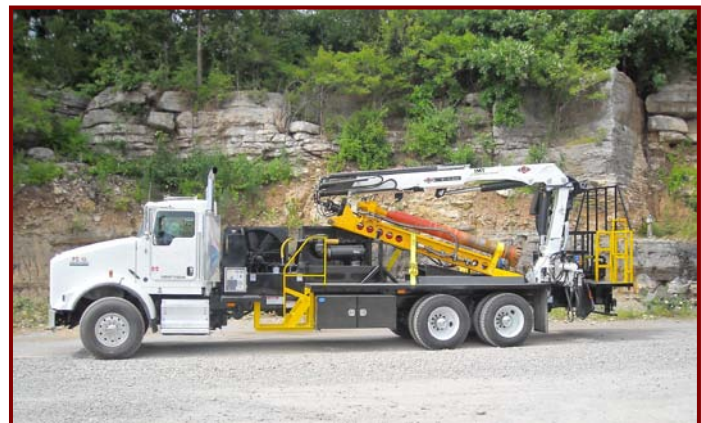


### CHASSIS SPECIFICATIONS

<b>Make   Model:</b>	Peterbilt 365
<b>Year:</b>	2010
<b>Engine:</b>	Cummins ISM – 425 hp
<b>Transmission:</b>	Eaton Fuller FRO 10-speed
<b>Drivetrain:</b>	6 x 4
<b>Front Axle:</b>	20,000 lbs
<b>Rear Axles:</b>	46,000 lbs Dual-Locking
<b>GVW:</b>	66,000 lbs
<b>Suspension:</b>	Hendrickson
<b>Brakes:</b>	Air
<b>Wheels:</b>	Front – Aluminum Rear – Steel Inner, Aluminum Outer
<b>Fuel Tanks:</b>	80 Gallon Aluminum
<b>Additional Features:</b>	Air Conditioning XM Radio GPS Navigation Cruise Control Air-Ride Driver's Seat Air-Ride Cab Power Windows & Locks Engine Brake
<b>Options:</b>	2010 Peterbilt 367 – 500 hp

### EQUIPMENT SPECIFICATIONS

<b>Crane:</b>	IMT 20/141 Articulating Crane Rear-Mounted
<b>Air Compressor</b>	Sullivan Palletek 950 CFM
<b>Power Take-off :</b>	Air Shift (PTO)
<b>Attachments:</b>	Hydraulic Rock Drill
<b>Additional Features:</b>	Oil Cooler Cooling Fan Platform & Cradle for Rock Drill Underbody Toolbox



( Shown on 2007 Kenworth T800 )